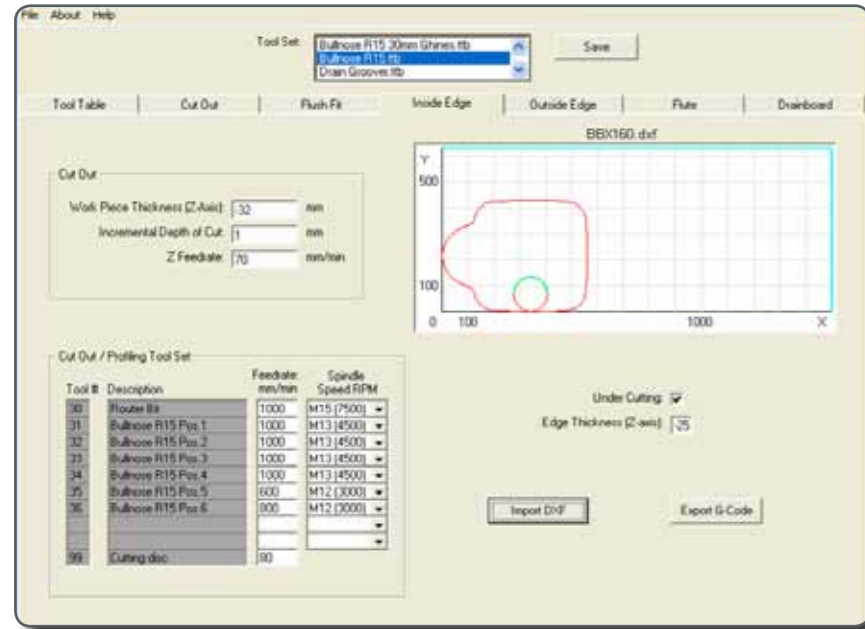


How do you operate C3?

CnCutCam – simplifies programming

First, you need a shape-i.e. the outline contour of your sink edge. If the dimensions are known, the shape can easily be drawn directly with the built-in CAD program. If the dimensions are not known, you can easily download virtually a sink-shape as a file, which contains all the necessary dimensions, from www.scandinvent.com/DXF, or you can clean a file you get from the manufacturer.



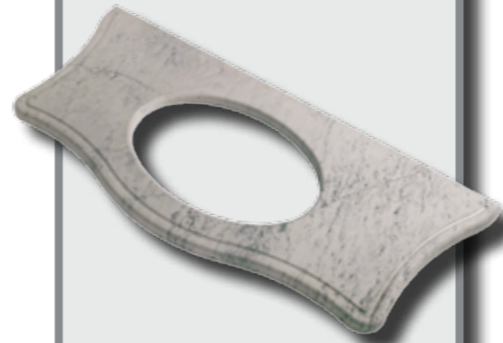
Once you have the file, save it on your USB memory stick and plug it into the machine's control panel. Then start up CnCutCam. A window displays a tab menu with several options and methods for mounting the sink.

Click on your desired tab and enter all necessary values required, such as material thickness and the tools to be used. Click on save and your cutting program will be created.



C3 includes standard programs for making:

- ▶ Cut outs
- ▶ Flush fit sinks and cooking tops
- ▶ Internal and external edge profiling and polishing
- ▶ Internal sharp corner.
- ▶ Flutes
- ▶ Drainboards (recessed surfaces)
- ▶ Text engraving



The easiest way to produce kitchen tops!

- ▶ Easy and fast
- ▶ Compact size

- ▶ User friendly
- ▶ All you need is basic computer skills



ScandInvent

www.scandinvent.com • info@scandinvent.com

Scandinvent AB
Ödhumlagatan 10 SE-723 55 Västerås SWEDEN,
Tel: +46 (0) 21 14 90 00, Fax: +46 (0) 21 12 48 88

Scandinvent UK
PO Box 3078, EASTBOURNE, BN21 9GJ.
Tel: 01323 520001, Fax: 01323 502 103

Scandinvent AB reserves the right to develop and improve any products specifications and designs, including whilst contracts are being executed. In this regard, all figures supplied should be viewed as indicative and approximate.

A few of C3's advantages

Easy and Fast

You get to work almost immediately. The installation is very quick. There is no difficult calibration and it's extremely easy to use. This means you can start production right away.

The Price

This is one of the most affordable CNC-machines available.

Finance

If you don't purchase the C3 outright, the cost of leasing the machine can be a very attractive alternative.

Quick Return of Outlay

A sinkhole cut out with a profiled and polished edge normally takes about 25 to 45 minutes to complete. After less than one day the monthly charge is covered. Or to put it another way, you have to make just three cut out's per month to pay for the cost of the machine.

Tool costs

The tools used in the machine last longer than tools used for manual work. One router bit can last for 30 cutouts or 15 drainboards.

The Quality

The C3 is both robust and compact. All the vital components, including the ball screw and linear guide, are made to the highest quality.

Product

C3 is a milling and engraving machine designed to make accurate cutting out of stone for sinks and cooking tops easy. The entire process is run from the integrated PC Windows® control panel. The user-friendly interface in the modern computer makes it possible to draw, change and save thousands of drawings and figures at the machine without any prior knowledge of CNC-techniques.

The machine includes CnCutCam, a user-friendly software to make CNC programs of any sink or cooking top. More complex operations are possible with higher CAD/CAM experience levels. The unique open gantry combined with a compact space-saving design allows for any size workpiece without having to take into account the machine tool envelope.

Travel, X:	1500 mm/59"
Travel, Y:	650 mm/25"
Travel, Z:	100 mm/4"
Spindle power:	5 hp
Spindle speed:	0 – 18 000 rpm
Tool connection:	1/2"
Width:	2300 mm/91"
Depth:	1250 mm/50"
Height:	1400 mm/55"
Weight:	1500 Kg/3,300lbs

How long does it take to make a cutout with polished edge?



11.00

The drawing tells you the client wants a kitchen top with a under mounted franke BBX160 sink.

11.05

You don't have the exact dimensions of the sink contour, so you download a template file from scandinvent.com.

11.07

Now you put the material on the machine and measure the thickness.

11.10

In the control panel you write the thickness of the slab and set the starting position. Then you start the machine. The machine tells you when to change tools, wich takes around 3 minutes in total. As the machine works you are free to do other things.

11.50

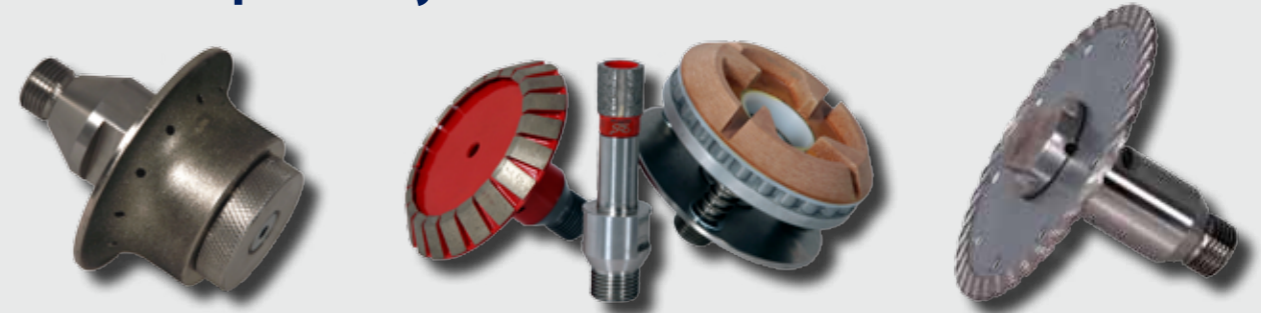
The hole is done and the edge are polished. Just hose it off and mount the sink.



Word from a customer.

"Now we can produce three times as many kitchen tops per day, compared to when we were working manually"

We can provide you with a number of different tools



The new standard – compact for large workpieces

